

## Happy Xmas and BIG thank you

For making 2018 such a successful year.

A really pleasing trend developing during 2018 is the number of schools who are booking courses well into the future. This demonstrates your confidence in our Service, so we will make sure its reciprocated by providing you with the best courses we can. It doesn't mean the Centres are all fully booked, we do have plenty of space so please contact us as soon as you can to reserve a course for your school.

We are also developing new courses. Some time ago we told you about our staff wellbeing weekends, so maybe in the New Year it's worth considering as an option? Another weekend course we are keen to trial is community based and designed to support schools. We are looking at family based options, for example parent/child to help with family bonding. If you are interested in any type of weekend option please contact the relevant centre.

Finally, on behalf of Oxfordshire Outdoors I wish you and your school a very happy Xmas and best wishes for the New Year. Here's to a successful 2019!

Kevin Jackson Service Lead



Coming  
Soon!

### For 2019 .....

- ◆ The Service will be entering the social media age with Instagram and twitter accounts due to go live early in January. We will provide you with opportunities to link your school into these while you are at the centres .....
- ◆ A new web page for corporate volunteering and related opportunities. This will have a specific focus and is aimed at bringing defined benefits to the Service .....
- ◆ New opportunities for courses, especially weekends. We will be trialling different styles of courses during 2019. If you are interested please contact us
- ◆ Our Service Conference theme is 'A point of difference' and we will be defining what this means for each centre and, importantly, what this will look like for your course .....
- ◆ New website articles from Service staff; watch out for the videos too .....



**Have a great Xmas and New Year**

### Thai cave rescue



Do you remember the fantastic cave rescue drama back in the summer? It gripped the imagination and was headline news.

**Dan Thorne** (Woodlands, on the left) was recognised for his work in contributing to the success of this complex rescue.

Dan is the Chair of the South and Mid Wales Cave Rescue Team. Along with Gary Mitchell, Warden South and Mid Wales Cave Rescue Team & Assistant Chair British Cave Rescue Council, they recently received the **Wales Platinum Care Award 2018** for their work; this was widely reported in the [Welsh media](#).

**Well done** to Dan, Gary and the South & Mid Wales Cave Rescue Team

### GOLD news

It's really pleasing to inform you that all 3 Oxfordshire Outdoors centres (Kilvrough Manor, Woodlands and Yenworthy Lodge) now hold the [AHOEC GOLD](#) award. This is an external validation of the safety and quality of our courses., with a rigorous inspection process every 2 years.

I'm sure you will be pleased to know of this and wish to congratulate all Oxfordshire Outdoors staff in achieving this prestigious award.

Well done all.



### Yenworthy in print



In the May edition of the [School Travel Organiser](#) magazine, Yenworthy featured as a case study. The link will take you to the magazine, scroll to pages 44,45 to have a look at the article.

You can contribute to the magazine too, as well as nominate for school travel awards. Might be worth thinking about for your school?

### A review idea with impact

A reviewing exercise from Yenworthy:

#### Activity:

Introduce the Lego tower and blocks and explain what red and blue signify then invite students to either pay an evidenced compliment to another student and then place a blue block or finish either "Today I learned that ...." or "I am really proud of myself because...." for a red brick. Let the activity run and probe and draw out or reframe any feedback that needs more focus. Blue bricks can be given to the student receiving the compliment to allow them to add it to the tower. (15 mins)


If you have any novel ideas, please let us know, all contributions welcome



## Some ideas for 2019....


*Below are some of the suggestions we have been asked to consider running, so we will.....*

### Staff wellbeing.....




Designed to make the most of our stunning locations, our staff wellbeing courses tend to operate over weekends and will be designed according to your needs. We can go from fully active to the more sedate and anything in between. Its an ideal opportunity to bring teams together and promote bonding

### Scouts; guides; cubs; brownies.....




How about using an Oxfordshire Outdoors centre as a base for an adventure weekend; or summer camp? We will tailor course content to meet your needs and timings

### Skills development.....




Interested in taking an activity that extra bit further? We will help you develop your skills and safety recognition to the next level and beyond. Offers open to both primary and secondary groups

### Corporate volunteering.....



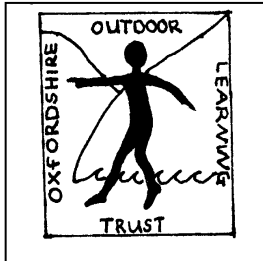
Interested in supporting our work? How about a volunteering weekend to help us with improving our facilities which will directly support the schools using us. We can provide an optional activity to help things along .....



*If you are interested in any of these please contact the Service on 01792 232743*

[admin.kilvrough@oxfordshireoutdoors.co.uk](mailto:admin.kilvrough@oxfordshireoutdoors.co.uk)

## OXFORDSHIRE OUTDOOR LEARNING TRUST



**THE OXFORDSHIRE OUTDOOR LEARNING TRUST** would like to remind you that bursaries are available to Oxfordshire children and young people needing financial subsidy to attend courses at Kilvrough Manor, Woodlands, Yenworthy Lodge or Hill End and, for a trial year, at other approved centres. Schools should apply directly to **Lesley Williams, Secretary to the Trust**, [secretary@oolt.org.uk](mailto:secretary@oolt.org.uk), using the form in the attached document, describing the background of the child/children requiring support, in line with the given criteria.

Bursaries are currently 50% of the 5 day charge : £160 with a maximum of £500 to a school, if requested for several children. Payment is made by cheque to the school, following the residential visit, upon receipt of the impact pro forma, also attached.

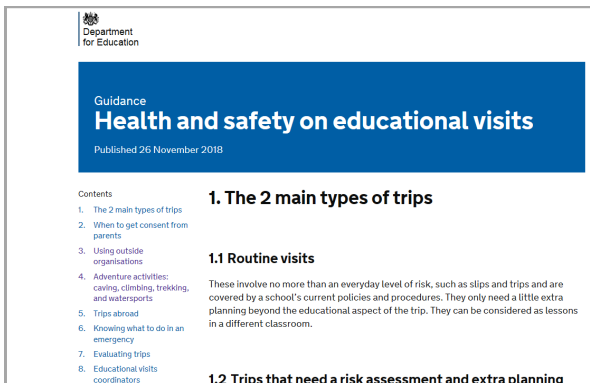
**£3,000** is available each year but amazingly, that has not been fully allocated in the last two years when we are sure there are more families in our schools who need financial support. **In 2018, we have provided £2,440 for 17 children in 8 schools.** And we have as yet received **no applications at all for 2019**

Although the bursaries are not currently fully taken up, our funds are depleting with little recent top up. **Lesley Williams raised £1,376 sponsorship from a wingwalk in September 2017;** the **Exiles mountaineering club** to which Dave Thorne belonged always contributes the proceeds of their **AGM raffle** – but there are currently no more new donations in sight. Trustees would be delighted to hear from anyone who is seeking a focus for sponsorship – we have a banner and provide tee shirts! – or from schools organising an outdoor challenge day or even a cake sale, non-uniform day etc.

**Enjoy your 2019 outdoor experiences!**

**Lesley Williams      07982 439 828 (m)**

**[secretary@oolt.org.uk](mailto:secretary@oolt.org.uk)**



At long last the DfE has published its long awaited guidance document [Health and safety on educational visits](#) and can be viewed using this link.

The guidance sets out 8 specific areas to consider in planning a visit:

*The 2 main types of trips ; When to get consent from parents ; Using outside organisations ; Adventure activities: caving, climbing, trekking, and watersports ; Trips abroad ; Knowing what to do in an emergency ; Evaluating trips ; Educational visits coordinators*

Although the DfE guidance is very much slimmed down from previous versions, don't be misled as it is very clear about the level of planning required for the very wide range school visits.



The DfE document directly refers the reader to the Outdoor Education Advisers Panel (OEAP) National Guidance for further details on its [8 key points](#) and this is a **must read** for all involved in the management, planning and delivery of off site visits programmes.

The OEAP National Guidance has updated its links and guidance for these 8 key points. The DfE document specifically refers to the OEAP guidance and its importance in the management of visits.

These changes affect all users and need to be looked at in the light of your current documentation; planning processes; delivery and

how you evaluate and monitor your programmes.

## EVC's

EVC's will need to assess the documentation and decide if, how and where it will impact on your school visits programmes.

For OCC schools and establishments the new document and OEAP guidance is applicable to you. For non-OCC schools who have attended our training, the advice is as before, that is adopt and follow the guidance as your central referral.

## Training

These changes will be reflected in the OCC EVC training and revalidation courses and in Visit Leader training.

To book your place on any of these courses contact Nick Rose [Nick.Rose@Oxfordshire.gov.uk](mailto:Nick.Rose@Oxfordshire.gov.uk)

## News and updates

Key news and updates relating to educational visits are regularly posted on our Service website, so make sure you check them out on the [Educational visits latest news](#) page